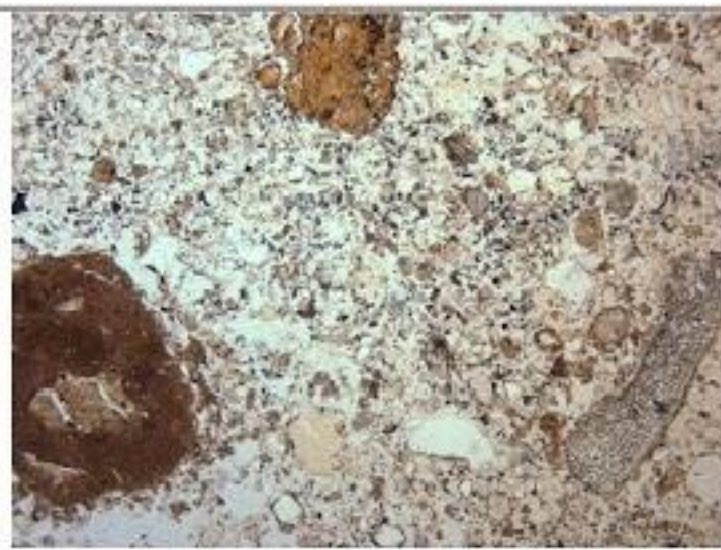


# Task 2

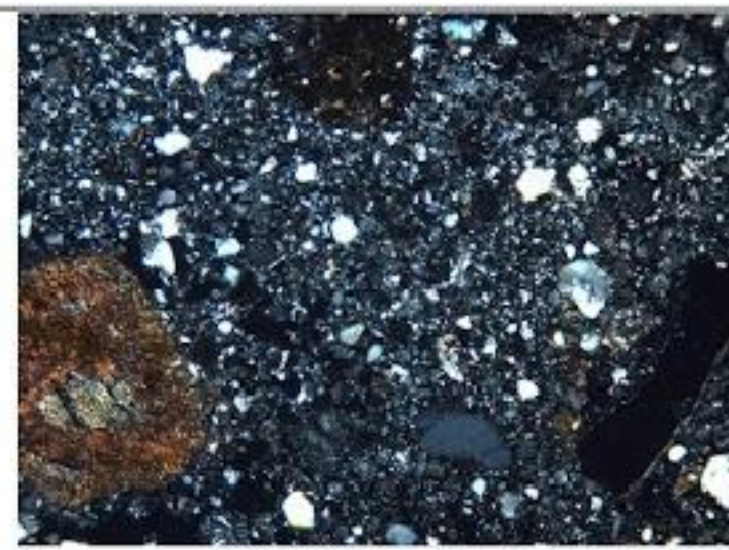
There are three sets of micrographs - left is in plane polarised light, right is in cross polarised light of the same thing.

Q1. What differences do you notice between the cross and plane polarised views of each image?

Q2. The caption of each set refers to a Holocene layer in the Tabon Cave site - refer to the section drawing, and discuss:  
 - what changes are there over depth?  
 - what could these changes mean?



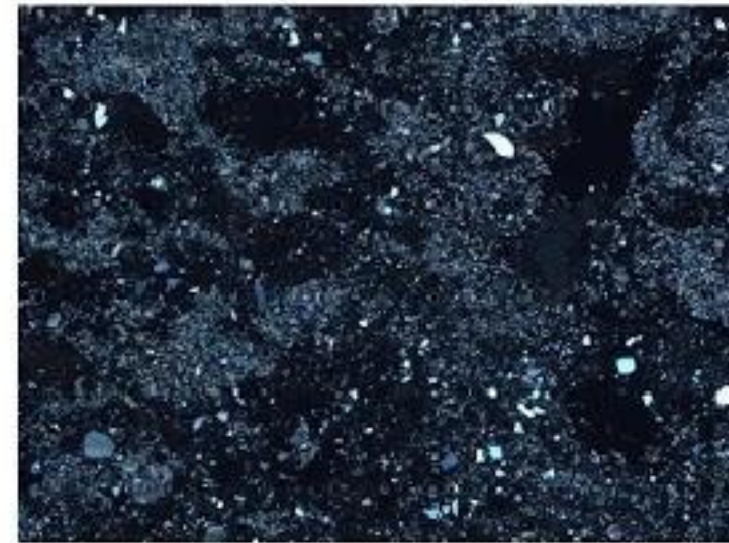
Layer 2-3 upper typical fabric in TBN 2/1, PPL, with clay-rich pedofeatures & plant remains  
 1000µm



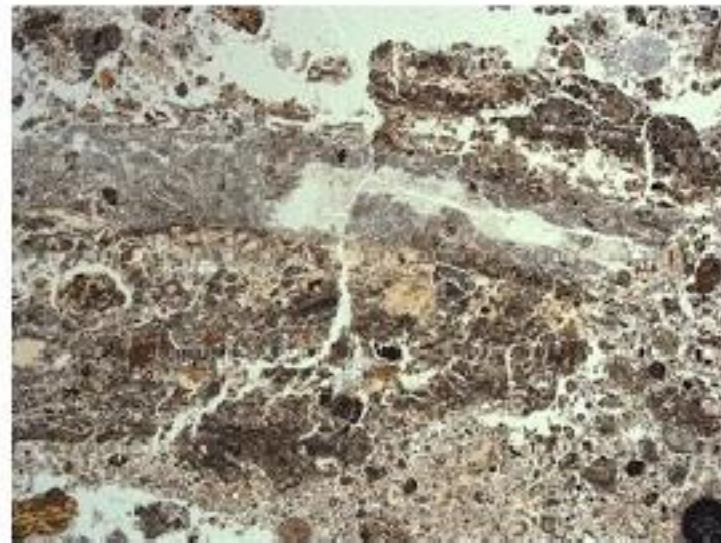
The same in XPL; frequent quartz sand is visible, along with occasional cave minerals



Layer 3 lower typical fabric in TBN 2/2, PPL, showing frequent infills of cave minerals (grey)



The same in XPL; quartz becomes rarer, and is often found in patches; magnification is x 5.8



Layer 4 typical fabric, travertine fragment



The same in XPL, magnification is x 5.8

## Square S8E2 East Wall

